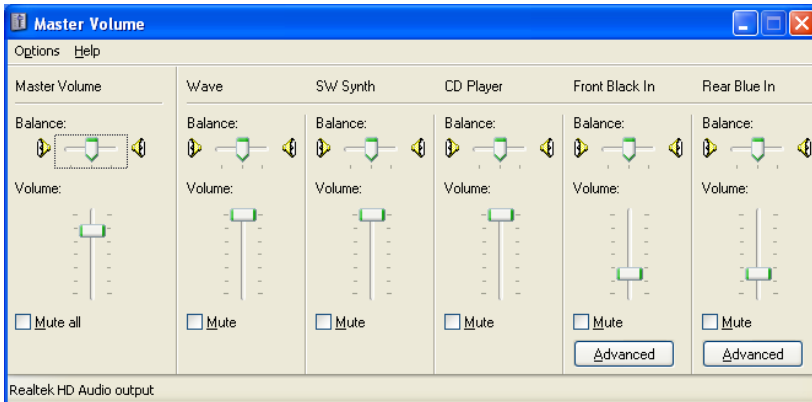
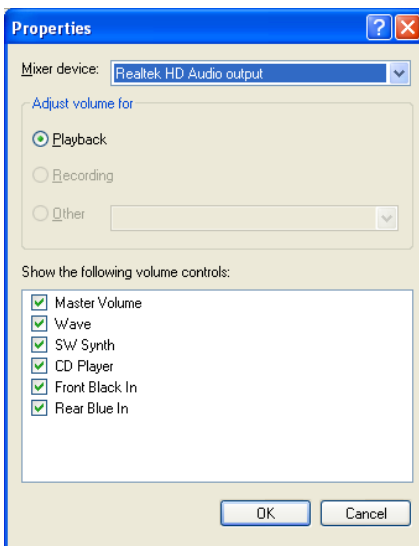


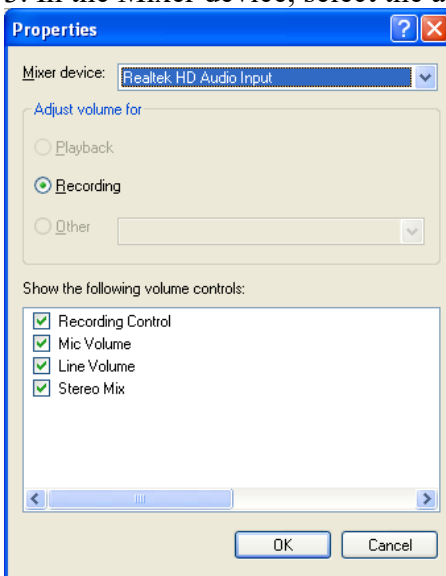
1. Open the Volume Controls by double clicking on the Volume icon in the lower right system tray. Go to Options and select Properties.



2. In the Mixer device, select the audio output. Make SURE all the boxes are checked. Select OK.

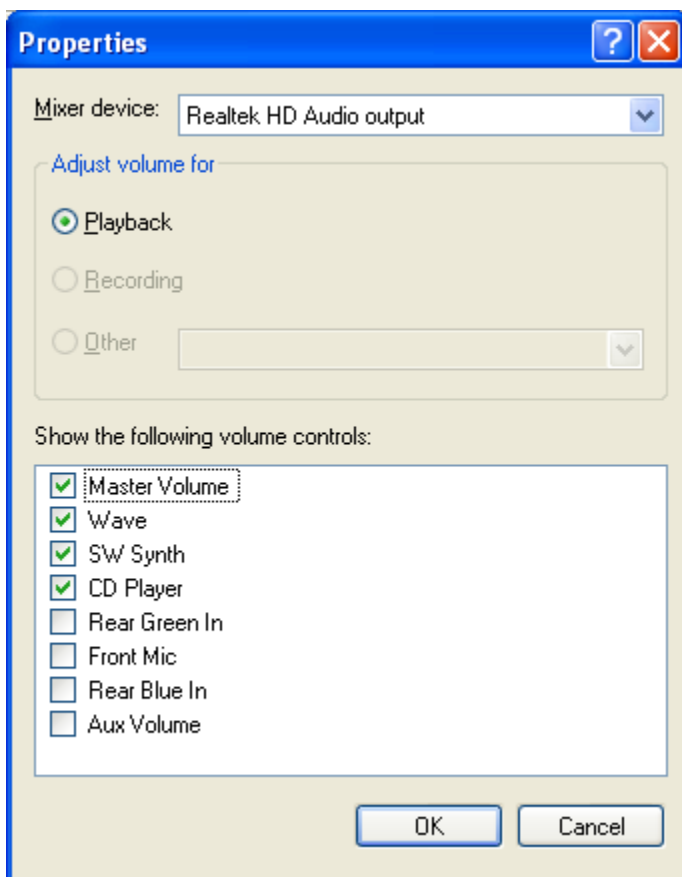
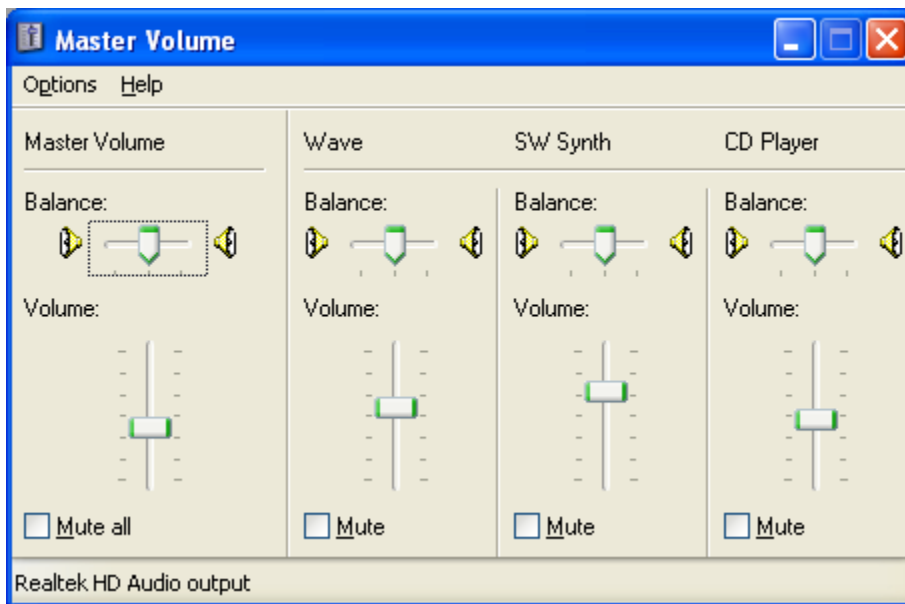


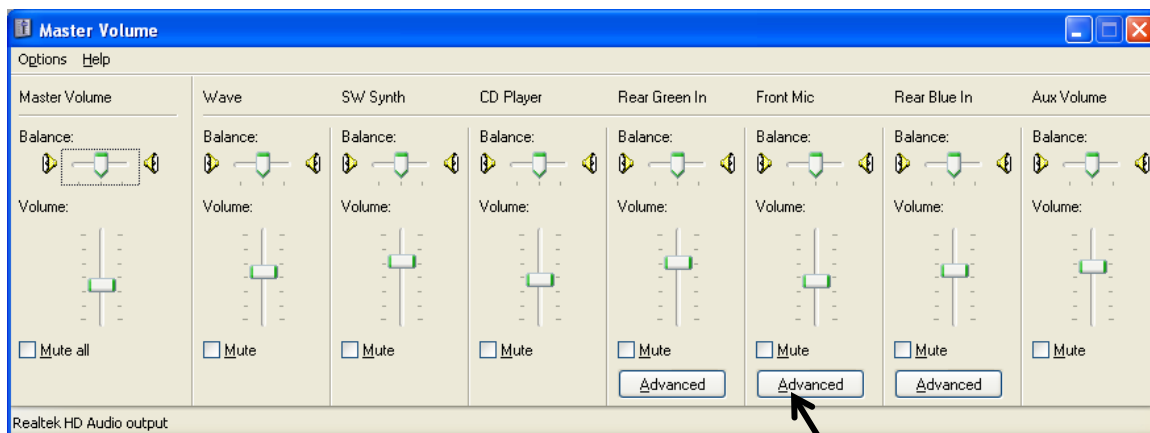
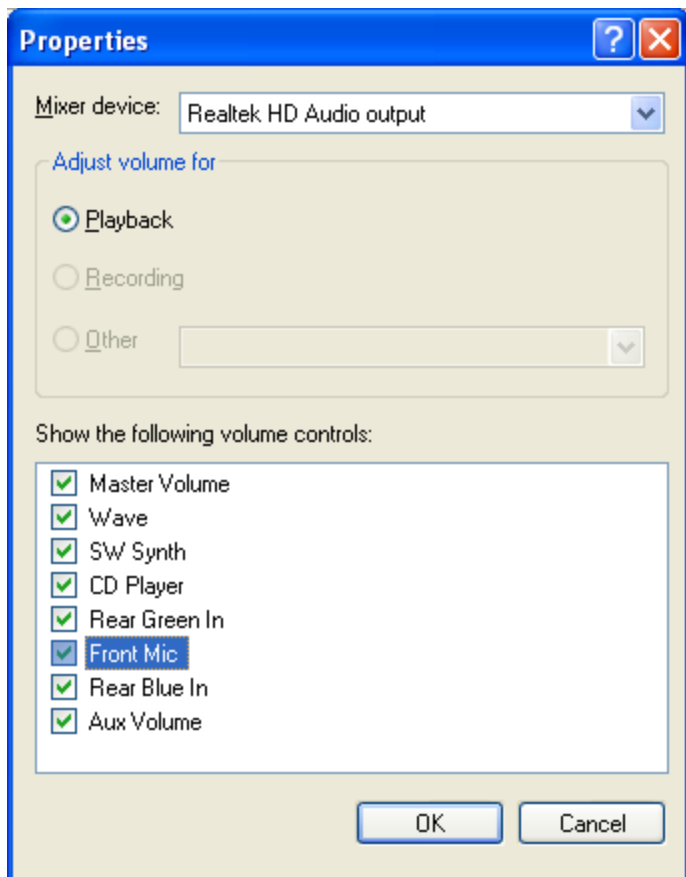
3. In the Mixer device, select the audio input. Make SURE all the boxes are checked. Select OK.



4. Make SURE all the Master Volume boxes are not muted and the volume is up at least ½ way.

These additional screen shots were added for newer computers (September 2012):





Advanced Controls for Front Mic



These settings can be used to make fine adjustments to your audio.

Tone Controls

These settings control how the tone of your audio sounds.

Bass: Low  High

Treble: Low  High

Other Controls

These settings make other changes to how your audio sounds. See your hardware documentation for details.

☒ Microphone Boost

Close