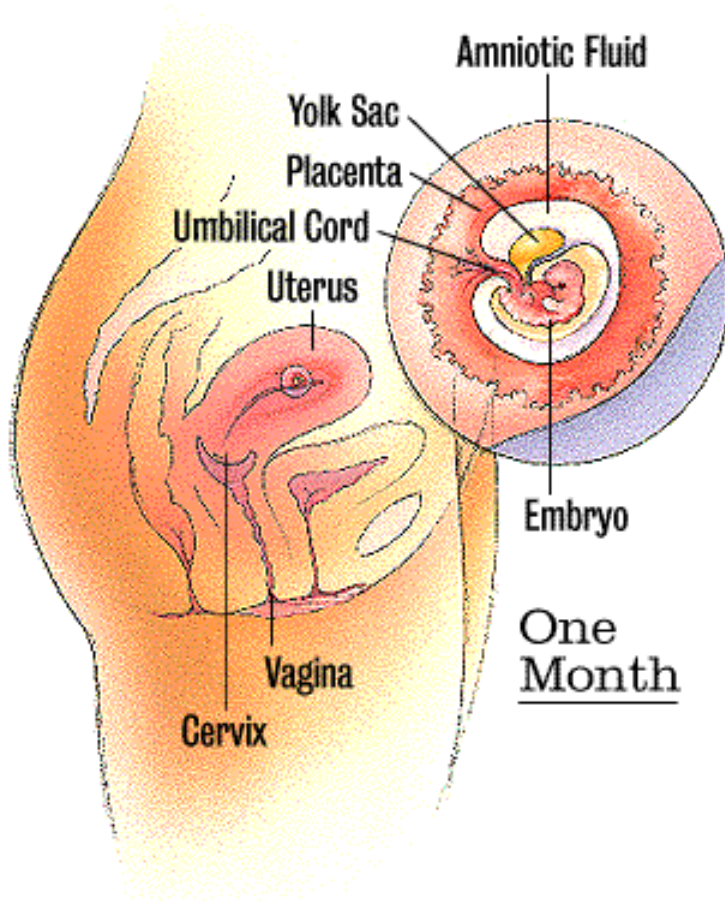


Fetal Development

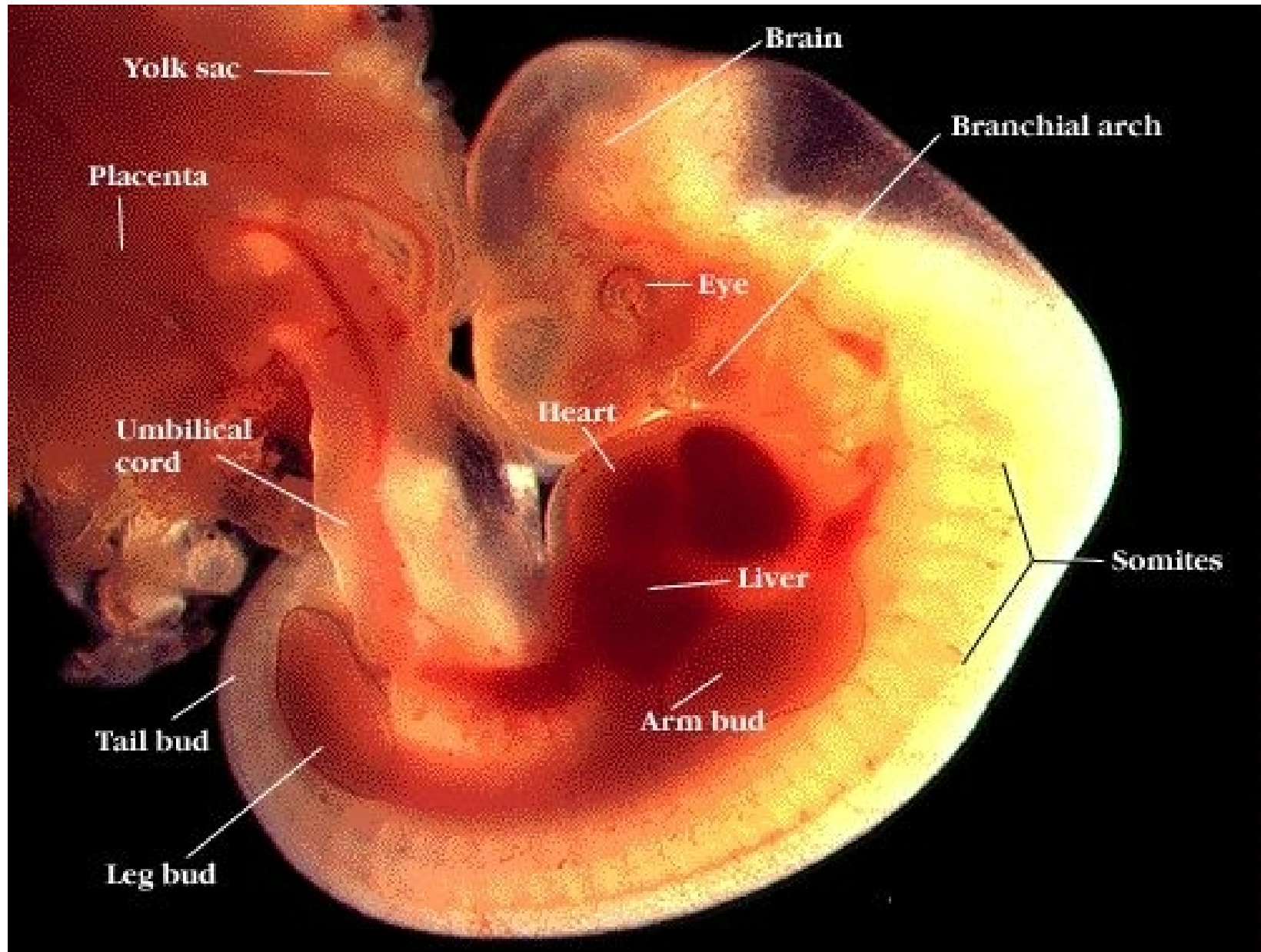
Month by Month

First Month

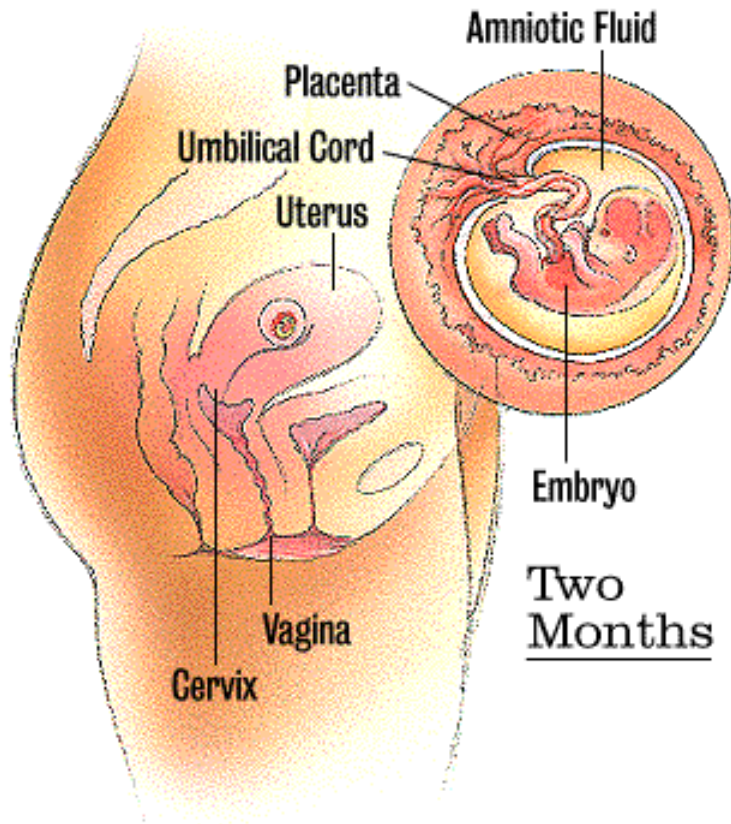


- By the end of the first month, the embryo is about **1/10 of an inch long**. The heart, which is no larger than a **poppy seed**, has begun beating.

First Month

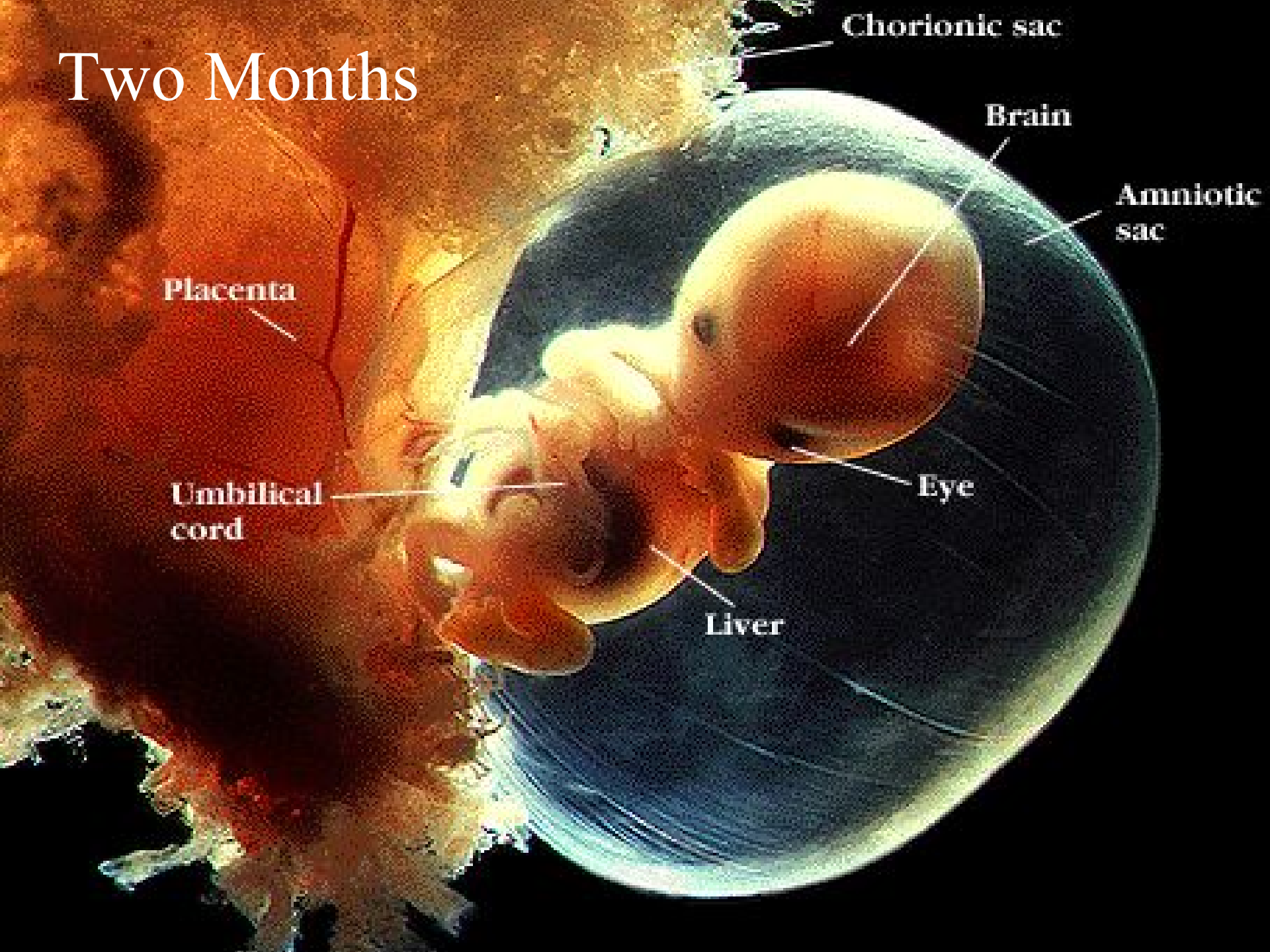


Two Months

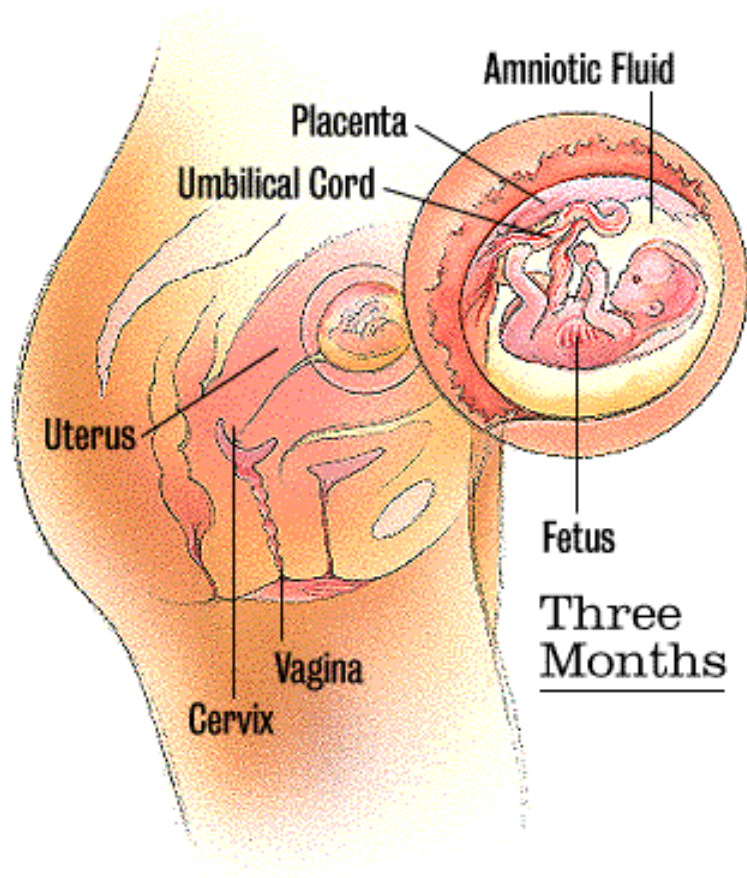


- The embryo is about **1 inch long** and has distinct, slightly webbed fingers. **Veins** are clearly visible. The **heart** has divided into right and left chambers.

Two Months

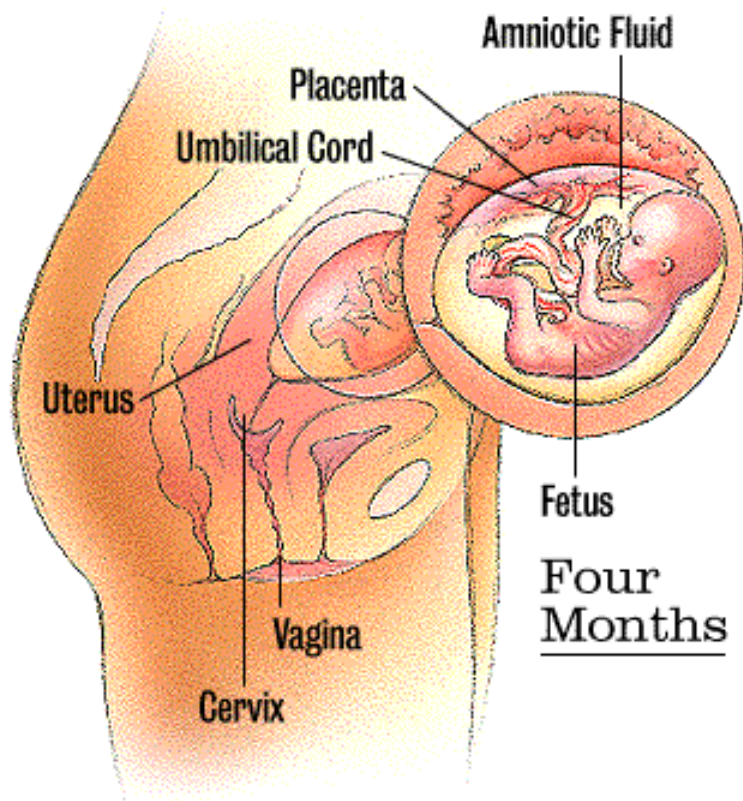


Three Months

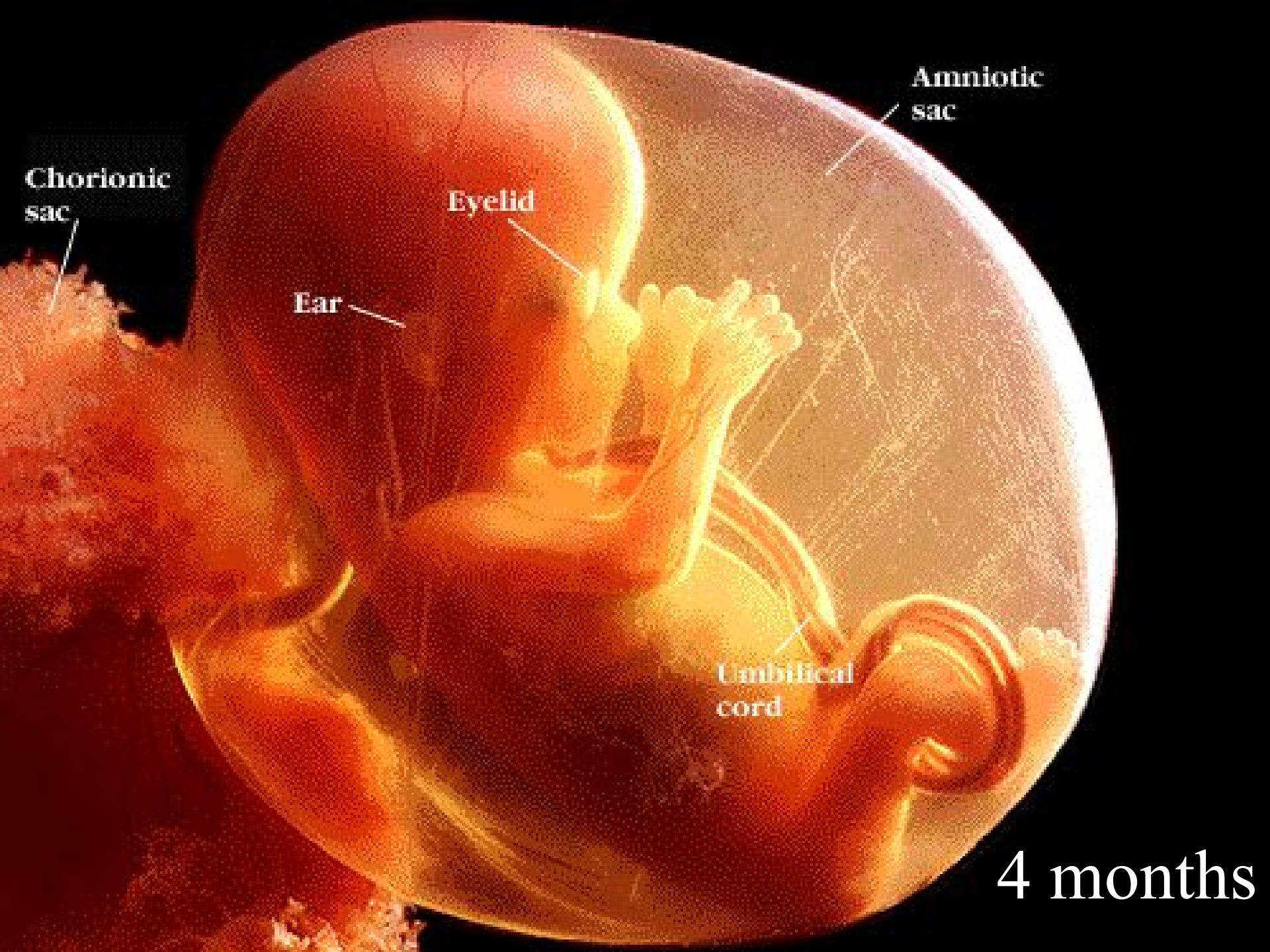


- By now the fetus is **2 1/2 to 3 inches long** and is fully formed. He has begun swallowing and kicking. All **organs** and **muscles** have formed and are beginning to function.

Four Months



- Your baby is covered with a layer of thick, downy hair called **lanugo**. His heartbeat can be heard clearly. This is when you may feel your baby's first **kick**.



Chorionic
sac

Amniotic
sac

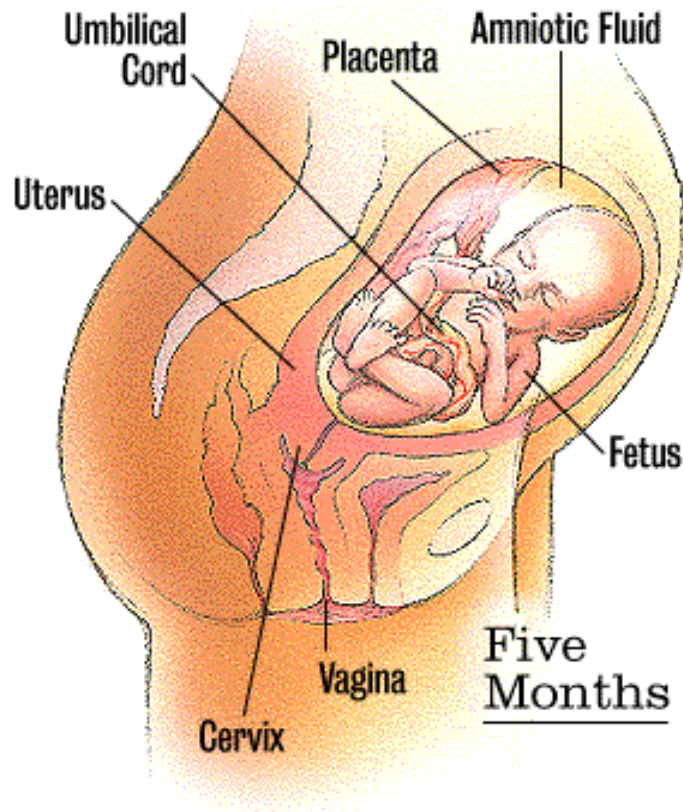
Eyelid

Ear

Umbilical
cord

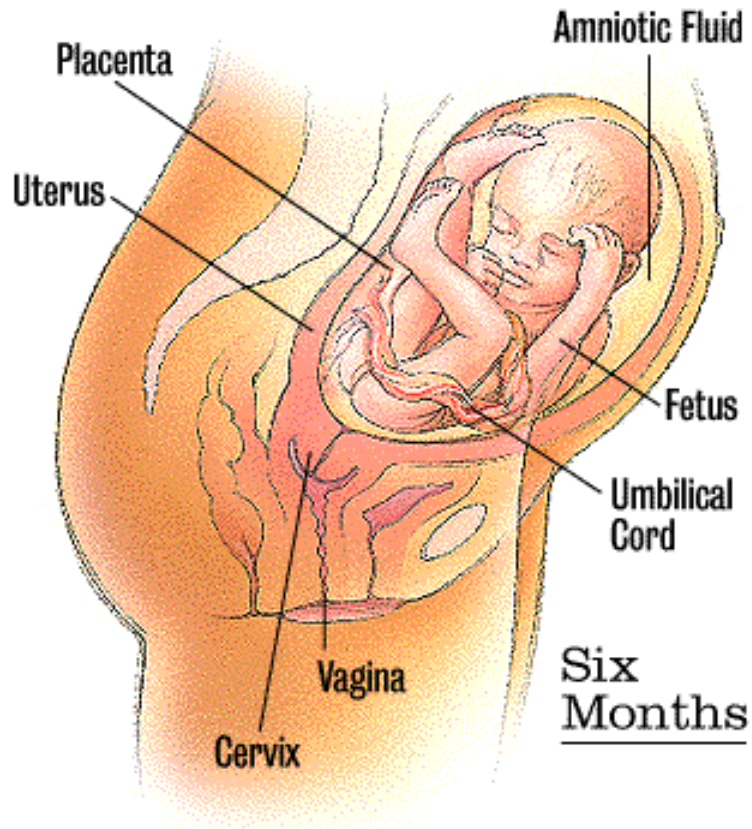
4 months

Five Months



- A protective coating called **vernix caseosa** begins to form on baby's skin. By the end of this month, your baby will be nearly 8 inches long and weigh almost a pound.

Six Months



- **Eyebrows** and **eyelids** are visible. Your baby's lungs are filled with **amniotic fluid**, and he has started breathing motions. If you **talk** or **sing**, he can hear you.

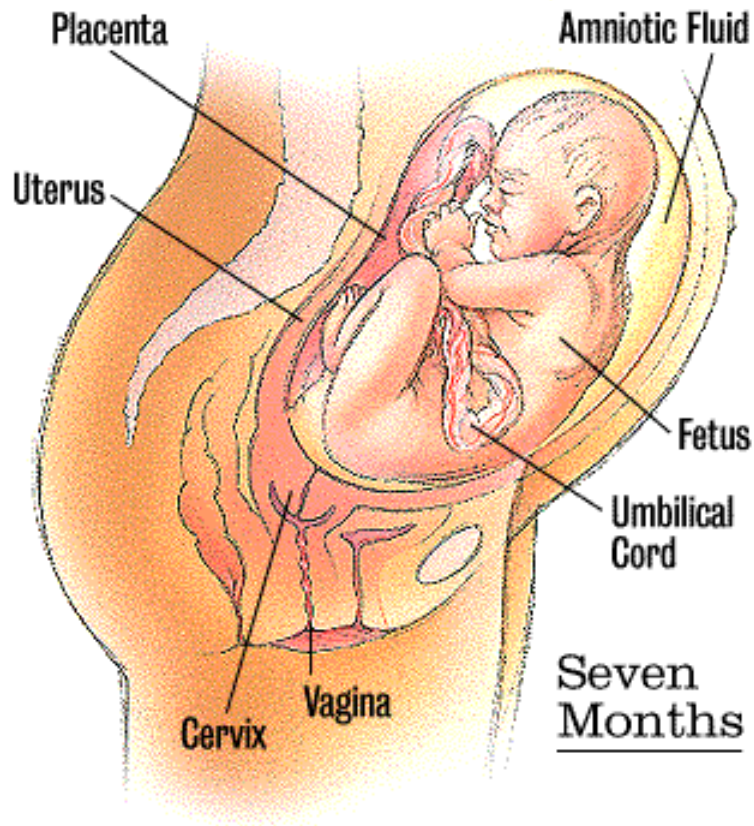


Lanugo (downy hair)

Vernix

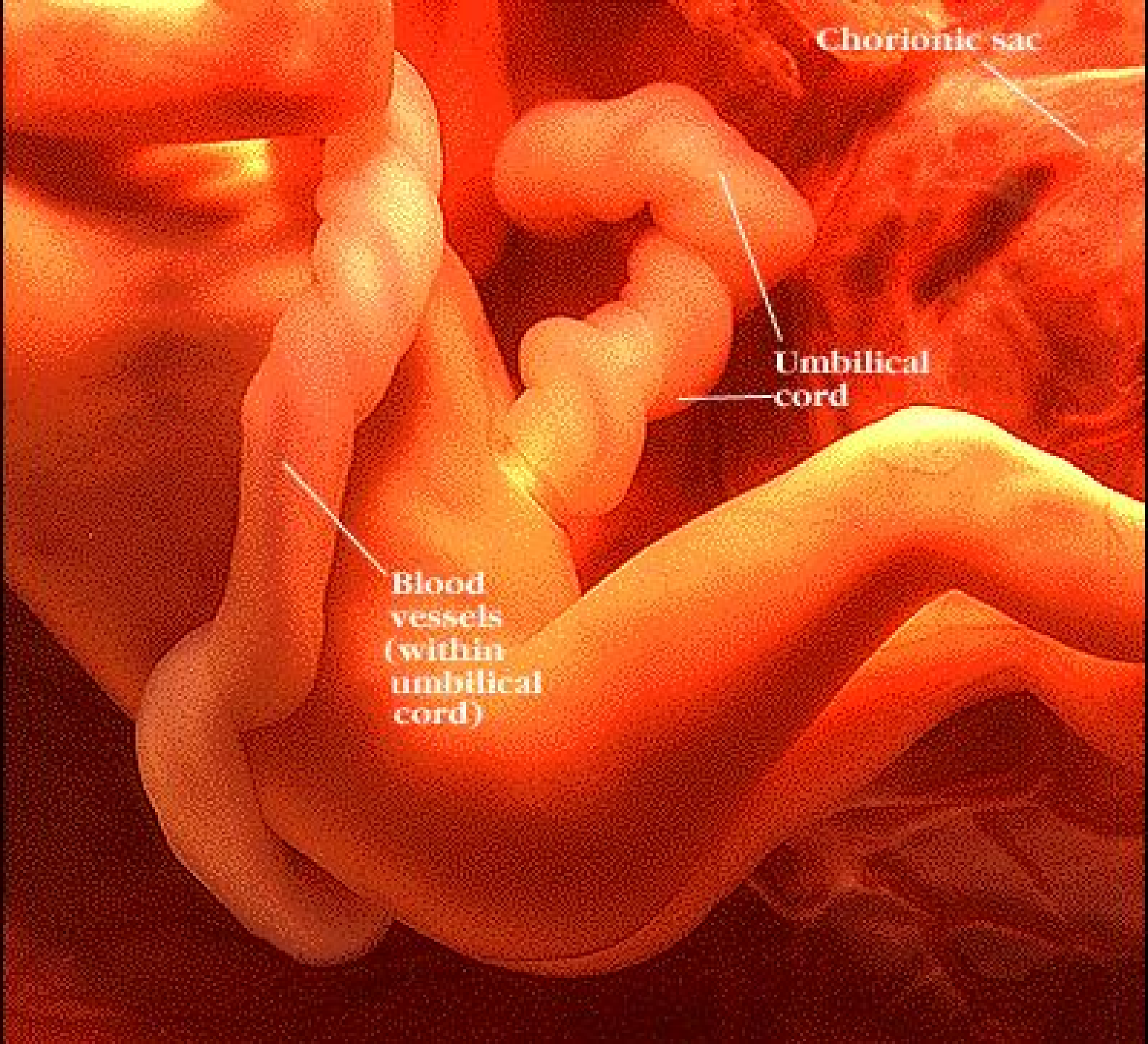
6 Months

Seven Months



- By the end of the seventh month, your baby weighs about **3 1/2 pounds** and is about **12 inches long**. His body is well-formed. **Fingernails** cover his fingertips

7 Months

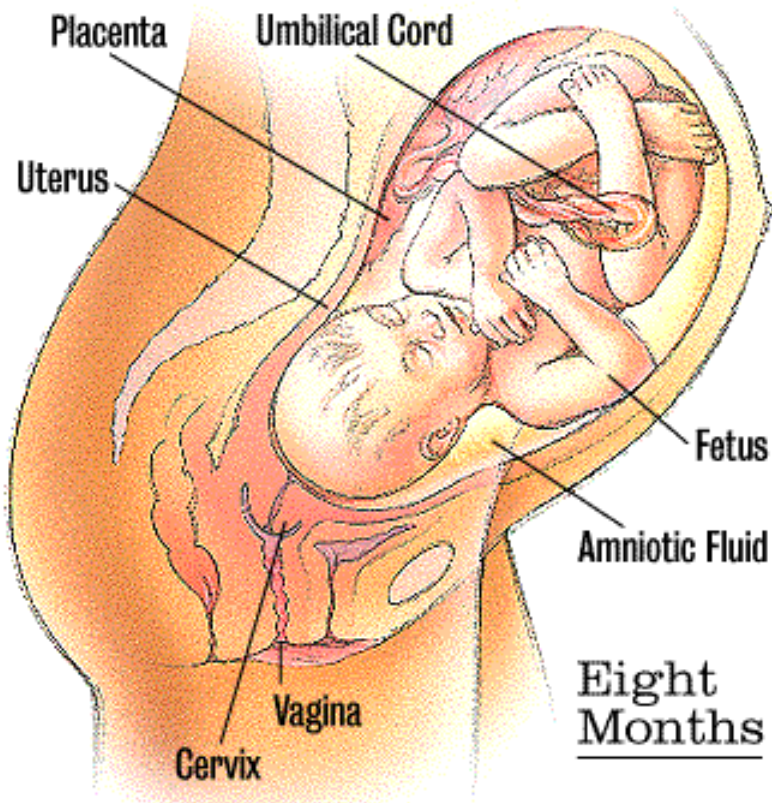


Chorionic sac

Umbilical
cord

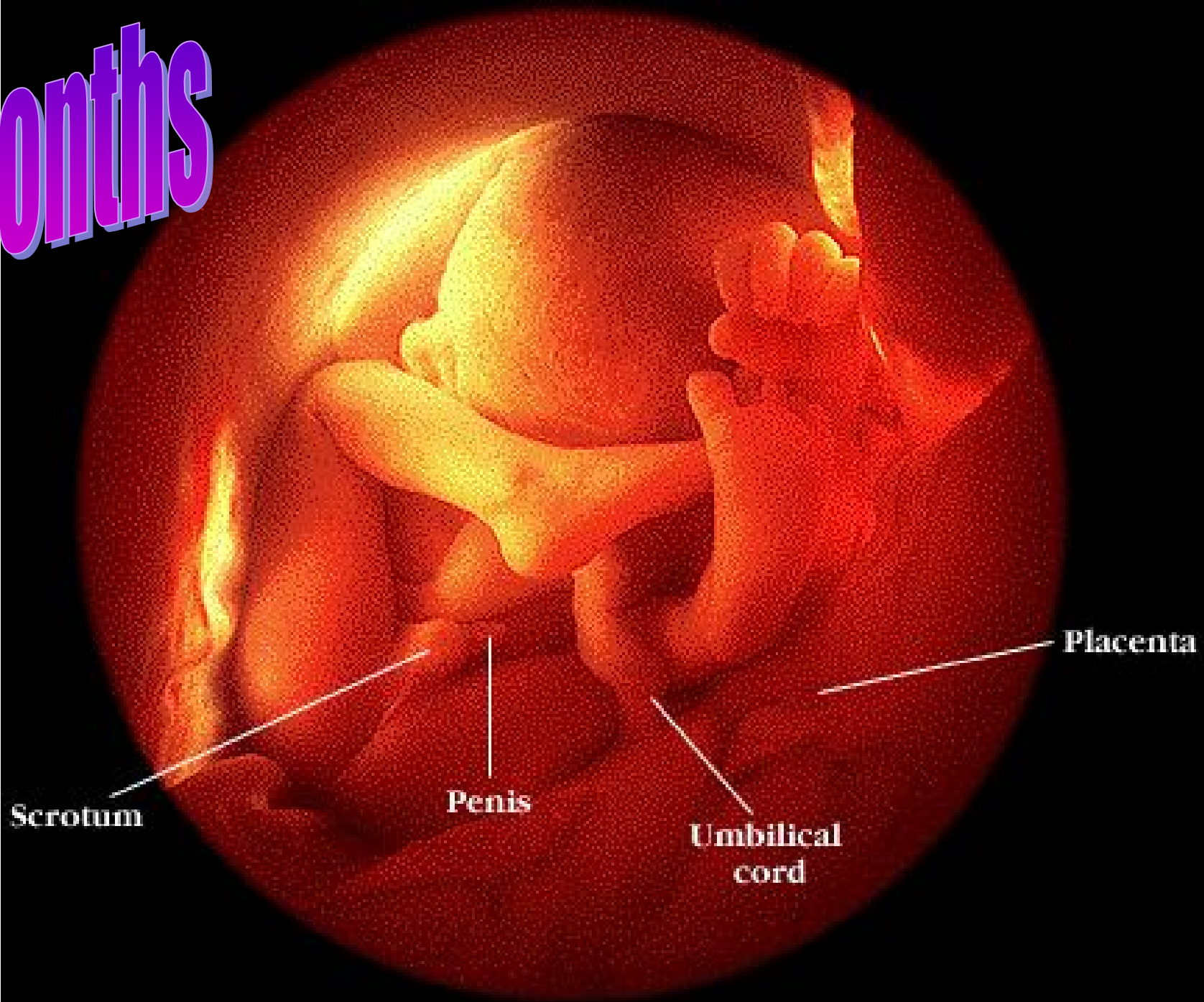
Blood
vessels
(within
umbilical
cord)

Eight Months

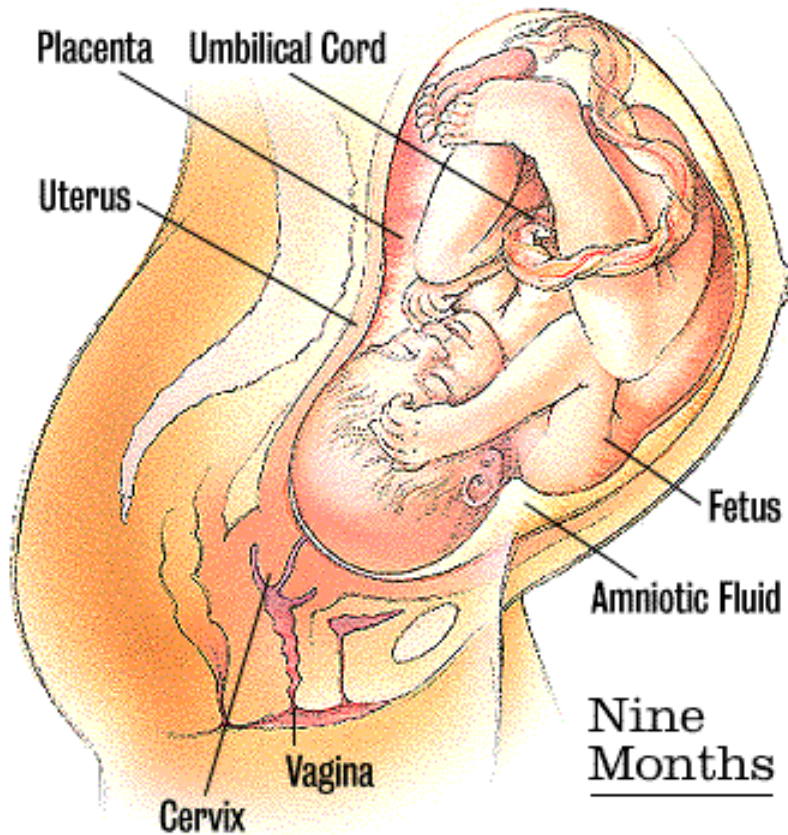


- Your baby is gaining about **half a pound per week**, and layers of fat are piling on. He has probably turned head-down in preparation for birth. He weighs between **4 and 6 pounds**.

8 months



Nine Months



- Your baby is a hefty **6 to 9 pounds** and measures between 19 and 22 inches. As he becomes more crowded, you may feel him move around less.